



**BCP SAFEGUARDING
CHILDREN** PARTNERSHIP

Bournemouth, Christchurch & Poole Safeguarding Children Partnership Yearly Report

2024/25



Yearly Report 2024/25

Contents	Page
1 <u>Introduction</u>	2
2 <u>Implementation of the Bournemouth, Christchurch & Poole Safeguarding Children Partnership</u>	3
3 <u>Children and young people in Bournemouth, Christchurch & Poole</u>	6
4 <u>Our Priorities 24/25</u>	10
5 <u>Safeguarding partners improvement and progress</u>	16
6 <u>The work of the safeguarding partnership sub-groups</u>	20
7 <u>Independent scrutiny and assurance</u>	30
8 <u>Multi-agency safeguarding training</u>	32
9 <u>Local Authority Designated Officer summary report</u>	38
10 <u>Child Death Overview Panel summary</u>	39
11 <u>Financial information</u>	40



Introduction

Welcome to the Bournemouth, Christchurch and Poole Safeguarding Children Partnership yearly report 2024-2025.

This report provides an account of the work we have completed or progressed to:

- establish the BCP SCP to ensure the new partnership has strong foundations from which to lead a multi-agency approach to safeguarding children and young people and ensure all agencies fulfil their safeguarding responsibilities
- maintain safeguarding as a priority for all partners as evidenced in the quality of engagement and support to keep local children at the heart of our work
- test the effectiveness of multi-agency safeguarding practice and promote a culture of learning and challenge to achieve good standards.

Following the dissolution of the Pan-Dorset Safeguarding Children Partnership, the new Bournemouth, Christchurch and Poole Safeguarding Children Partnership (BCP SCP) partnership was established in July 2024; publishing its [multi-agency safeguarding arrangements in December 2024](#).

The creation of the BCP SCP fulfils the statutory duties set out in [Working Together to Safeguard Children 2023](#) to have three statutory safeguarding partners who have joint responsibility and accountability for implementing multi-agency safeguarding arrangements.

The three statutory partners are:

- Bournemouth, Christchurch and Poole Council
- NHS Dorset (Integrated Care Board)
- Dorset Police



Our shared vision: The shared vision of BCP Safeguarding Children Partnership is for every child and young person to be and feel safe, enjoy good physical, emotional and mental health, have pride in their unique identities, feel that they belong and have opportunities to thrive.

Our shared responsibilities: Collaborative leadership and timely decision making are crucial to the effectiveness of multi-agency working and to identify and address system issues. Protecting children from abuse, neglect and exploitation requires multi-agency join up and co-operation at all levels and local organisations and agencies who work with children and families play a significant and often statutory role when it comes to safeguarding children. This means:

- Having a clear, shared vision for how to improve outcomes for children locally across all levels of need and all types of harm
- There is a prompt, appropriate and effective response to a child who is identified as suffering or likely to suffer significant harm to ensure the protection and support of the child
- Organisations and agencies are challenged appropriately, effectively holding one another to account
- The voice of children and families combined with the knowledge of experienced practitioners and insights from data provides a greater understanding of the areas of strength and/or improvement within arrangements and practice
- Information is sought, analysed, shared, and broken down by protected characteristics to facilitate more accurate and timely decision-making for children and families, and to understand outcomes for different communities of children
- There is effective collection, sharing and analysis of data, enables early identification of new safeguarding risks, issues, emerging threats, and joined-up responses across relevant agencies
- Senior leaders promote and embed a learning culture which supports local services to become more reflective and implement changes to practice, and have a good knowledge and understanding about the quality of local practice and its impact on children and families.

The past year has been a period of positive change and we’d like to thank everyone involved in making those changes happen. We would also like to thank all partners and practitioners for the work they do each day to support and safeguard children, young people and their families.

**Lead
Safeguarding
Partners**



Graham Farrant,
CEO, BCP Council



Patricia Miller, CEO,
NHS Dorset ICB



Amanda Pearson, Chief
Constable, Dorset
Police

**Delegated
Safeguarding
Partners**



Cathi Hadley,
Director Children’s
Services, BCP



Pam O’Shea, Chief
Nurse, NHS Dorset
ICB



Mark Callaghan, Assis-
tant Chief Constable,
Dorset Police



Implementation of the BCP Safeguarding Children Partnership

The Bournemouth, Christchurch & Poole Safeguarding Children Partnership implementation has developed out of the previous pan-Dorset safeguarding children partnership arrangements which allowed for continuity of business whilst also providing an opportunity to scope what was needed for the local area. We have ensured that both strategic needs and enablement of line of sight to operational practice and standards are reflected in our structure.

The main objective of the partnership arrangements is to gain assurance that the local safeguarding arrangements are working effectively; both as individual organisations and collectively in partnership, to support and safeguard children in our area.

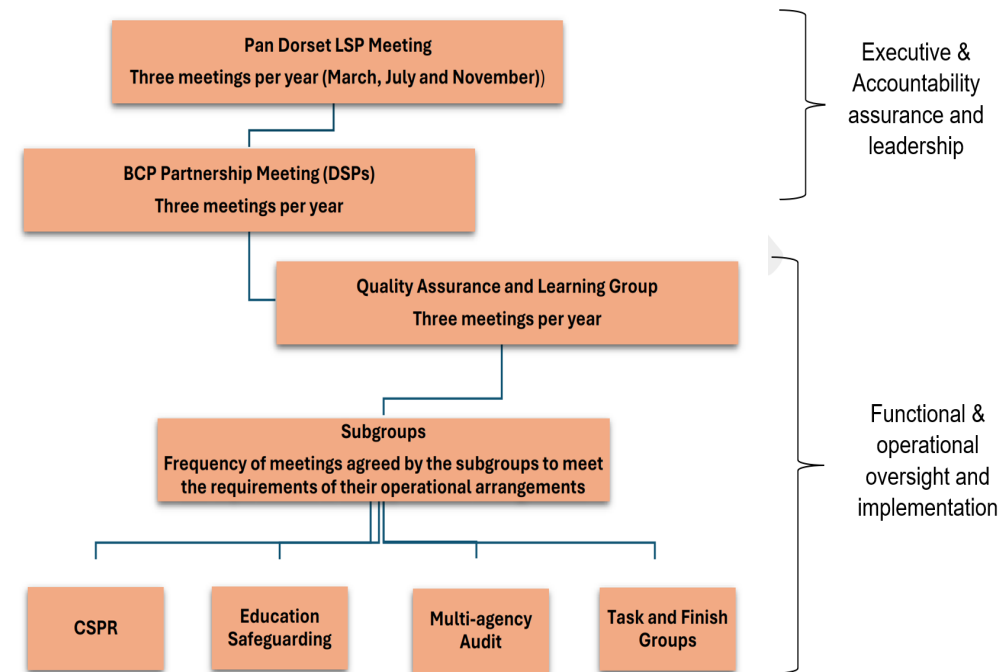
Each group has a clear purpose and terms of reference which enable us to collaborate, scrutinise, assure and drive forward improvements: details can be seen in the published multi-agency safeguarding arrangements [here](#). A focus on the identified priority areas and securing evidence of impact on the lives of children and young people using facilitative discussion and partnership insights and data is central to the work of each group.

Executive and accountability assurance and leadership

The lead safeguarding partners (LSP)

The 'Pan-Dorset' LSP meeting, brings together the executive leaders of the statutory safeguarding agencies: BCP Council, Dorset Police and NHS ICB Dorset (the latter two cover both Dorset and BCP areas). They are responsible for holding each other and their own agencies to account on safeguarding children matters and the discharge of their statutory duties. The LSP provides highest-level leadership focussing on system level effectiveness performance and demonstrating a commitment to strong partnership relationships, policy and resourcing.

Our structure and operational arrangements





The Delegated Safeguarding Partners (DSP)

The DSP are appointed by the Lead Safeguarding Partners, to represent and speak on behalf of their agency and can hold their agency to account, the DSPs are -

- BCP Council, Director of Children's Services
- NHS Dorset, Integrated Care Board, Chief Nurse
- Dorset Police, Assistant Chief Constable

The BCP DSP Partnership Meeting 24/25

The BCP DSP convenes the delegated partners plus senior representative of the education sector and the relevant agencies. Accountability for the performance of the safeguarding arrangements remains with the DSPs but with partners shared responsibility for the delivery and monitoring of the effectiveness of our local arrangements sits with this group. This is achieved with -

- Setting the priorities, agreeing core policy and procedures (in line with published arrangements)
- Promote and enable close partnership engagement with the education sector and other agencies
- Ensure good information and data sharing facilitates high quality analysis of local needs and emerging trends
- Ensure delivery of high-quality local reviews, including rapid reviews
- Enable provision of scrutiny and assurance activity, including independent scrutiny and local multi-agency audit
- Provide safeguarding training and dissemination of learning and key messages – both at organisation level and through multi-agency training
- Promote and enable the voice of children and their families, and practitioners about their experiences and use this to continually assess and improve.

Delegated Safeguarding Partners Chairing arrangements 24/25

During 2024/25 (from July 2024), the DSP was chaired by the BCP Council Director of Children's Services, Cathi Hadley.

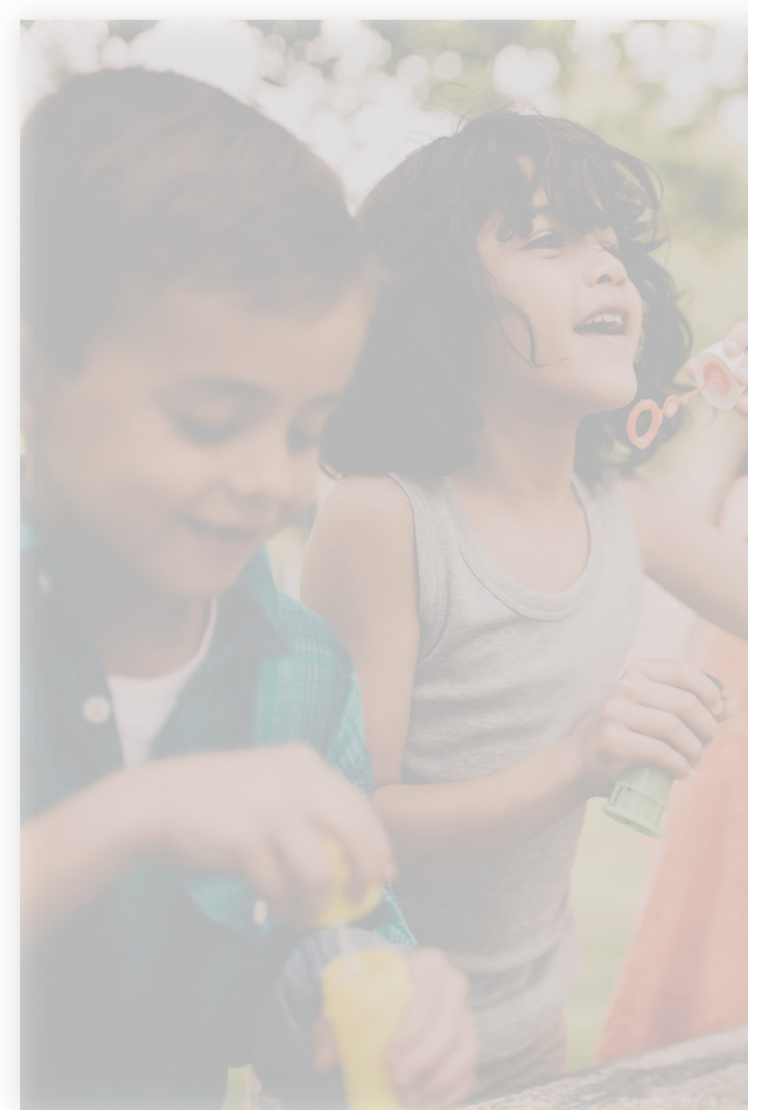
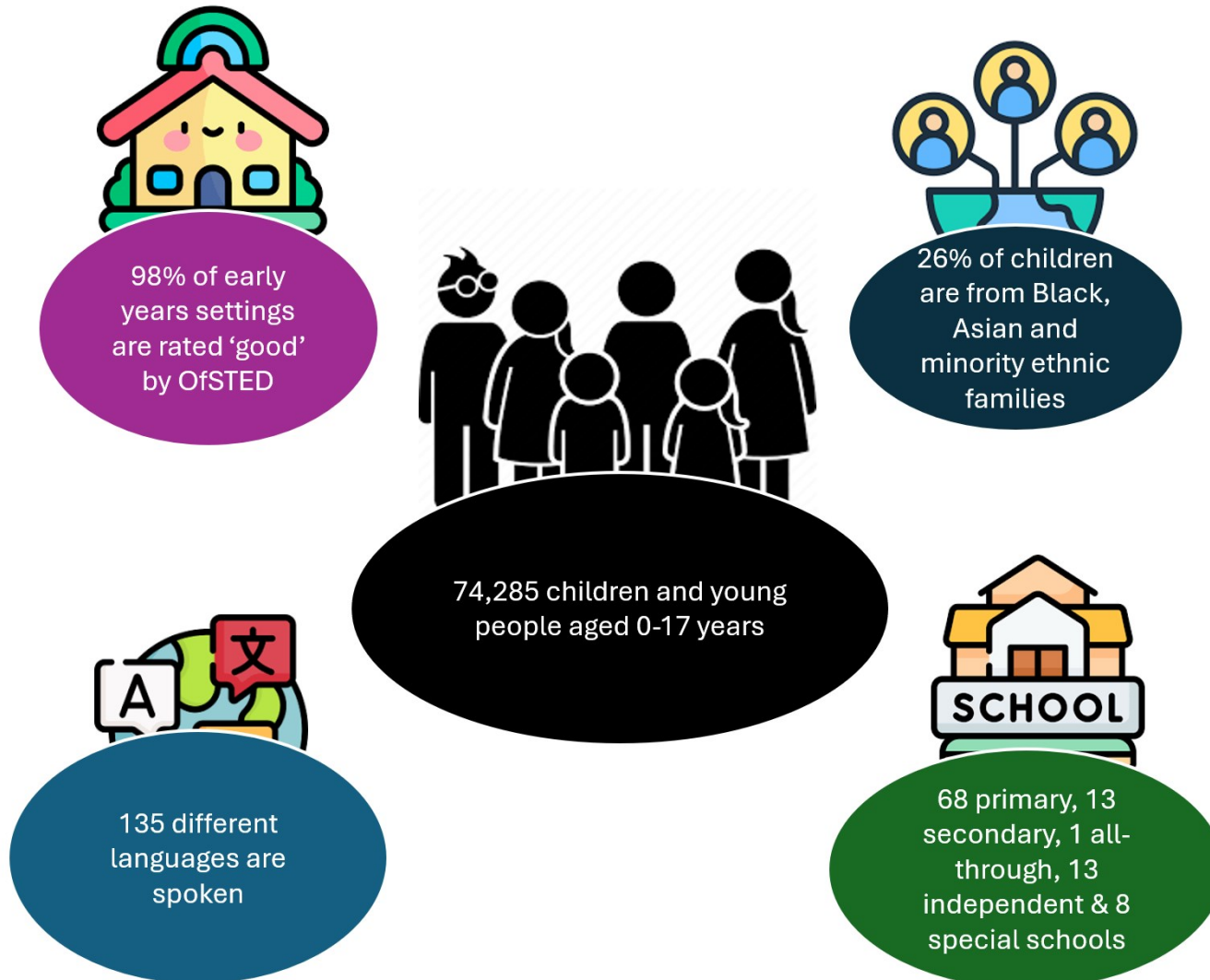
Functions of Partnership Chair role as set out in Working Together 2023

- To develop strategic links, support and hold to account all LSPs in fulfilling their safeguarding duties for children.
- Ensure that local arrangements are designed to work collaboratively and effectively by encouraging and supporting the development of partnership working between the LSPs, DSPs, independent scrutiny role and Multi-Agency Safeguarding Arrangements sub-groups.
- Chair the meetings of the DSPs, including any additional meetings convened as a response to specific and exceptional circumstances, with the help of the business manager and independent scrutiny role.
- Offer appropriate challenge to ensure that the partners are accountable, and that the local arrangements operate effectively.



Children and young people in BCP area

In Bournemouth, Christchurch and Poole -





Children and young people in BCP area

Areas of deprivation

While the BCP area is sometimes seen as a prosperous area, wealth is not evenly spread, and significant inequalities and pockets of deprivation exist.

Given the strong association between deprivation and poorer outcomes, it is important to understand where these

neighbourhoods lie to target services and resources effectively.

5,350 children and young people aged 0-25 in BCP (5% of the population) live in the 10% most deprived areas in England.

This increases to 15,035 (13%) when we look at the number living in the 20% most deprived areas.

Deprivation categories :

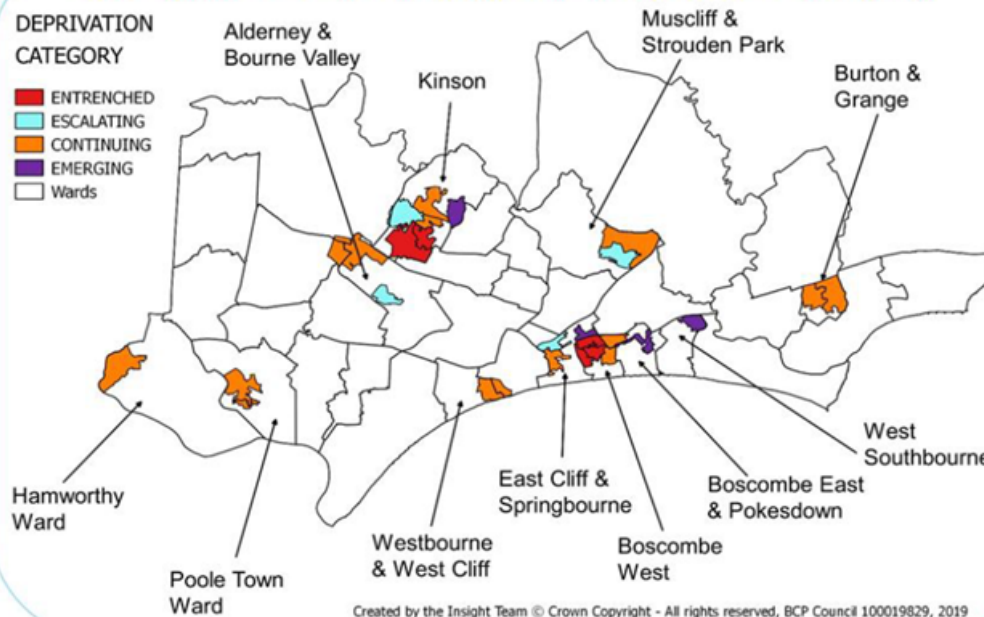
'ENTRENCHED' areas of deprivation are LSOAs whose ranking has remained in the most deprived 10% nationally, over both time periods 2015 and 2019.

'ESCALATING' areas of deprivation are LSOAs whose ranking has deteriorated and moved them into the most deprived 10% in 2019.

'CONTINUING' areas of deprivation are LSOAs in the most deprived 11-20% nationally in 2019.

'EMERGING' areas of deprivation are LSOAs whose ranking has moved them into the most deprived 11-20% during 2019.

LSOAs in the BCP area within the most deprived 20% nationally



25.2% live in poverty
(after housing costs are deducted)

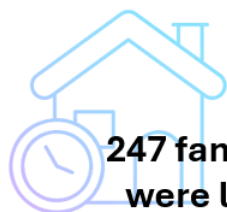


20% are eligible for free school meals



safeguarding needs

When children, young people and their families need help and support, in the period April 2024 to March 25, what we know that:



247 families / 564 children
were living in temporary
accommodation



25,426 contacts made to
children's social care, 14%
were referred for further
social work help



95% of assessments carried
out by children's services
were in line with statutory
time scales



4,000 children needed
an Education, Health
and Care Plan

There were 2,370 (3.2%)
of children had a social
worker



Around 300 children had a
Child in Need Plan and 494
had a Child Protection Plan



Ambulance or other emergency
contacts made to the MASH¹ on
about 2,000 occasions, with
about 8% referred for further
social work



Of the 721 cases were heard at
MARAC², 466 had children
linked to those cases (65%)
Of 5309 domestic abuse flagged
crimes, 73 were 16 years old
and 86 were 17 years old



561 were Children in Care³,
with about 800 entitled to
'care leaver' support
services

1. MASH—Multi-Agency Safeguarding Hub, a team of social workers, police officers and health professionals working together to decide on help needed for a child, young person and their families
2. MARAC—multi-agency risk assessment conference, a specialist panel to hear cases of domestic abuse and how to keep victims safe
3. A child in care means that a child is not living with their family, but might, for example live with a foster family and the local authority is responsible for the standard of their care



Multi-Agency Safeguarding Hub - Core Data

During this reporting period, safeguarding referrals submitted to MASH shows a continued rate of need and are within expected levels across the different sectors.

The December 2024 [OfSTED inspection of the BCP area](#) MASH, noted: “*The MASH prioritises its response to new contacts and referrals effectively, ensuring prompt triage and matching most families to appropriate services. Consent to gather more information is sought from families and dispensed with only when necessary. Managers sign off contacts after ensuring a comprehensive triage is completed and provide thorough and timely review following triage. Thresholds are well understood and consistently applied. As a result, appropriate decisions are made about the right services to support children, at the right level*”.

Indicator	Area	2021/22 Q4	2024/25 Q1	2024/25 Q2	2024/25 Q3	2024/25 Q4	National	South West	Good / Outstanding
Rate of children in need (CIN)	BCP	387.3	345.3	332.6	331.8	318.8	342.7	311.9	376.4
Rate of children with child protection plans (CPP)	BCP	50.9	65.8	64.3	66.1	66.5	43.2	40.2	43.6
Rate of children in care (CIC)	BCP	65.2	72.7	72.8	76.1	75.5	71.0	63.0	71.3
Rate of referrals to CSC	BCP	172.0	113.9	128.0	135.7	107.8	136.1	123.9	139.9
Police (percentage of total volume)	BCP	22.9%	23.9%	29.0%	28.7%	24.2%	28.8%	25.9%	29.1%
Schools (percentage of total volume)	BCP	26.0%	28.6%	23.1%	27.8%	28.5%	20.1%	22.3%	20.0%
Health Services (percentage of total volume)	BCP	18.7%	16.0%	15.7%	11.9%	14.5%	14.4%	13.6%	14.3%
Individuals (percentage of total volume)	BCP	8.7%	7.6%	7.7%	9.3%	9.5%	8.3%	9.7%	7.9%
Rate section 47 investigations completed	BCP	68.8	46.2	59.5	80.2	66.6	47.9	44.0	49.6
Percentage of second or subsequent child protection plans	BCP	20.4%	19.2%	20.1%	21.8%	34.2%	23.6%	24.3%	22.7%
Percentage of CIC who are UASCs	BCP	11.4%	7.6%	7.8%	8.3%	7.0%	9.0%	9.0%	11.0%
Number of Referrals to LADO	BCP	31	177	127	163	188			

Where children’s needs require a child protection plan, the inspection noted: “*Child protection investigations are comprehensive, and reports for conferences are detailed, presenting strengths and risks, and recommending appropriate, necessary actions. Conferences are well attended.*”

As a core means of protecting children in most need of protection it is essential that the multi-agency network around the child is well engaged. For example: during 24/25 Dorset Police report

- Child Abuse Investigation Team (CAIT) resources are now aligned along local authority boundaries in order to allow more effective partnership working
- Increased the skill levels in the MASH staff in order to be able to respond to high demand within the different demands such as Police Protection Notices, strategy meetings and case conferences
- With 100% report submission compliance for initial child protection conferences.



Our partnership priorities 2024/25

Priority

1

Violence and exploitation experienced by children and young people : including

A) Sexual violence and abuse, online abuse and exploitation **B)** Domestic violence and abuse **C)** Physical violence and knife crime

Priority

2

Children's mental health and emotional well-being

Priority

3

Child neglect



Our partnership priorities 2024/25

It was agreed that the safeguarding priorities would stay the same during the transition from the previous pan-Dorset safeguarding partnership to the new BCP SCP. Our priorities will be reviewed in Autumn 2025.

Review of our progress

- During this period, the level of partnership working across these priority areas shows a good level of collaborative working at both strategic and operational areas
- The progress on these priorities demonstrates how core policy and practice areas have been reviewed and developed. This report acknowledges that this is an essential step towards improving the effectiveness of partnership working and achieving consistency and quality of practice across multi-agency working
- Raising awareness of these priority safeguarding areas through regular communication and dissemination, as well as learning continues to be prioritised – both within each of the three statutory partners but also at multi-agency level
- There is also good use of internal review/audit systems to check the standards being achieved – more information on multi-agency quality assurance is shown at chapters 6 and 7.

Areas to be developed

While the new partnership structures have enabled good partnership working, there are under-developed areas such as:

- Achieving evidence of impact – this report acknowledges that the evidence of impact is an area for the partnership to develop, including identifying the evidence which it has available across the partnership and the way we will then utilise this
- Data – similar to above, whilst core data related to priorities is being monitored, strengthening and systemising our data collection around the priorities and relevant associated data is likely to deepen our quality of analysis
- Feedback from children, families and professionals – it is evident from single agency activity that progress has been made to capture feedback from different interaction and engagement points with children and families and professionals, through this report we recognise the need to harness that system feedback to provide an aggregate analysis to help the partnership understand and evidence impact of its work.

Priority 1
Violence &
Exploitation

Priority 2
Children's
Mental Health
& Emotional

Priority 3
Child Neglect

Sexual violence and abuse, on-line abuse and exploitation — our work this year

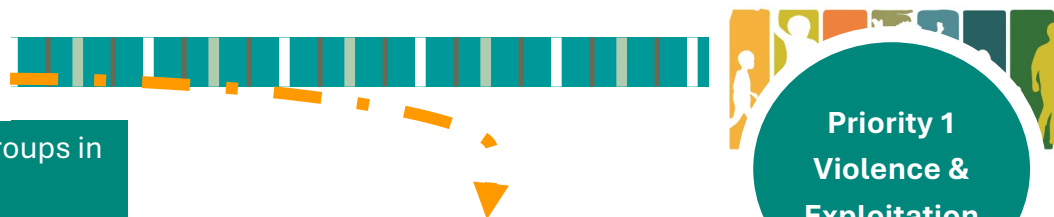
- The Extra Familial Harm Strategy has been agreed
- A new MET (Missing Exploitation & Trafficked) panel has been created ensuring that we now know and agree as a multi-agency children at high risk of exploitation
- Established High Risk of Harm meetings, chaired by Head of Service for those high-risk young people
- Introduced a new exploitation tool, CERAF (Child Exploitation Risk Assessment Form) – which allows us to identify and measure risk to children of all types of exploitation, but also of any change and impact on the child whilst we are working with them
- The MET (Missing, Exploited & Trafficked) multi-agency panel enables information to be shared in relation to exploitation—though violence and knife crime sits within the Community Safety partnership
- We have used Turnaround programme funding to employ a worker into the early help space and delivered work within the YJS space to work with our young people early when they begin to become involved with criminality
- A new Harmful Sexual Behaviour Framework has been developed in consultation with local education partners and all safeguarding partners, this work has been led by the BCP Community Safety Partnership
- A new Public Protection Notice form (Police generated to share safeguarding concerns about a child) contains a mandatory voice of the child section which ensures officers/staff completing the form obtain this
- University Hospital Dorset are active partners at the MET Panel, flag high risk children at hospital system and have driven forward use of CERAF tool for use
- Dorset Police, Paedophile Online Investigation Team (POLIT) team review all referrals regarding on-line abuse to ensure safeguarding advice is required and the appropriate action taken
- Dorset Police participates with Op Hydrant the national programme that supports child protection and abuse investigation issues and is engaging with the national recommendations around group organised CSE.

What has been the impact ?

- Children's social care has driven forward the partnership approach to improve the understanding of the level of risk our CYP are at from Extra Familial harm.
- Valuable time was spent not only creating the MET (Missing Exploitation & Trafficked) panel and ensuring we know our children well, but also developing out IT systems to cater for this- the new Exploitation tool (CERAF) took a considerable period to be added to MOSAIC (child recording system).
- Once achieved training was held with partners in relation to the new tool to achieve consistency of practice.
- We have also ensured National Referral Mechanism is within the process, and this has enabled a much better response and identification of risks of exploitation.
- There is focus around our unaccompanied asylum seeking young people potential trafficking and exploitation, ensuring the new tool is completed to help consider and identify any concerns.
- Active learning events were held in partnership and attended by the children's services workforce as part of Missing Exploited & Trafficked Children month in March
- Flagged children at Hospital promotes early response and information sharing.

Domestic violence and abuse - our work this year

- Children's social care continues to participate and be a partner in all subgroups in relation to the Community Safety partnership.
- Domestic abuse training to all frontline police staff has included the importance of capturing the voice of the child and their wider safeguarding needs.
- Domestic abuse Scrutiny Panels review our response to domestic abuse and the Force is also a member of a Wessex domestic abuse Joint Interoperability Group with the CPS to identify good practice and areas for improvement.
- Op Encompass is now well established and is a crucial tool in alerting schools when additional support may be needed for a student
- At University Hospital Dorset, Paragon DA Advocates help support people affected by domestic abuse



What has been the impact so far...

- The partnership working between children's social care and the community safety partnership has facilitated an increasing culture of challenge including the raising concerns about MARAC and the impact it makes, as well as process for re-referring (this is particularly low in BCP, but we also know we do not have a consistent approach to re-refer, as a partnership). As a result, this work will now be reviewed within the Community Safety Partnership.
- Dorset police have become more effective at using and enforcing bail conditions, civil orders and Domestic Violence Protection Notice in order to lessen the emotional impact of domestic abuse on children within the household.
- In 2024 142 requests were made under Sarah's Law legislation
- Hospital based DA advocates supported families with child victims of DA (53%), 5% of families included an unborn child and 1% involved older young people experiencing domestic abuse

Physical violence and knife crime - our work this year

- The Dorset Police Safeguarding Hubs incorporate knife crime and physical violence when considering exploited children. Those identified as being high-risk will be 'managed' in conjunction with the local authorities.
- A community safety partner sits on the BCP SCP delegated safeguarding partner meeting and there are close working relationships with the community safety partnership
- University Hospital Dorset contributed to the Dorset Knife Crime Awareness Campaign: **The true impact of knife crime**

What has been the impact so far...

- This approach driven forward by policing partners, will help all partners identify and understand the safeguarding needs of children including those initial presented as offenders. More work will be developed to assess the impact



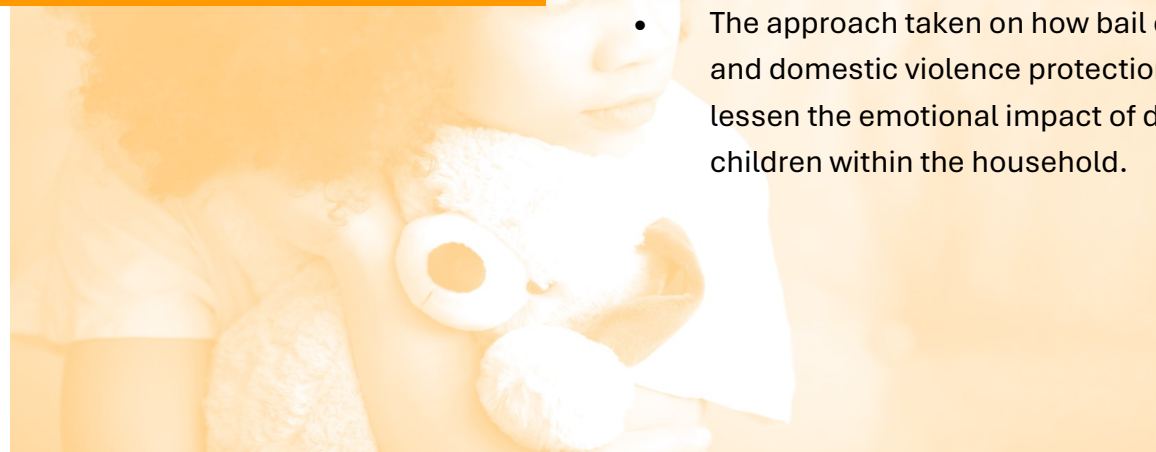
Priority 2
Children's
Mental Health &
Emotional
Wellbeing

Children's Mental Health & Emotional Wellbeing — our work this year

- Children's Social care are currently working alongside NHS colleagues in relation to MH services and considering a holistic approach within Early Help initially.
- Dorset Police seek to minimise the occasions young people are arrested and taken to a custody environment and will use voluntary attendance where possible.
- The Force has kept safeguarding children central in how it uses bail conditions, civil orders and Domestic Violence Protection Notices .
- Dorset Police monitors the use of Police Protection Orders to ensure officers are making use of the power and using it appropriately and liaising with out of hours/ children's social care when used.
- Dorset Health Care University Trust is fully involved with the two commissioner led transformation programmes - *Your Mind Your Say* (Children Young People and Families Mental Health) transformation. And the *Neuro Developmental - All-Age Autism Review*.

What has been the impact

- Children's social care work with NHS colleagues has directly shaped The Trauma Informed learning programme is underway as part of the Children's Services Practice Framework.
- The police approach taken to minimise the occasions children and young people means that - if arrested, there is an increased focus to ensure they are dealt with quickly and effectively and will be screened for achieving a 'reachable moment'.
- The health provision within the BCP MASH continues to be provided to ensure an informed response to CYP mental health concerns is provided
- The approach taken on how bail conditions, civil orders and domestic violence protection notices are used helps lessen the emotional impact of domestic abuse on children within the household.





Priority 3 Child Neglect

Child Neglect — our work this year

- Independent scrutiny was completed with recommendations used to shape the neglect strategy
- The partnership agreed its child neglect strategy identifying objectives for the partnership to focus on
- The partnership held its first annual safeguarding conference on child neglect
- A focussed project group undertook a review of neglect toolkit with the aim of making this more accessible and usable for practitioners alongside families, as well as strengthening the evidence-based elements.
- A partnership neglect task and find group has been established to take the objectives forward.
- Training has been provided to police officers and police staff to inform them of what they should be looking for when in a house or engaging with young people
- Allocation of neglect cases will be discussed at the Force Tasking meeting to ensure appropriate ownership
- University Hospital Dorset host the Child Protection team, the team are involved with strategy meetings where child protection medicals are considered.

What has been the impact so far...

- A range of partners attended the neglect conference helping to raise awareness of child neglect
- Following the review of the neglect toolkit the partnership is more informed on the steps to take to introduce a partnership neglect screening tool and a neglect assessment tool.
- Dorset Police took part in the Neglect Scrutiny Panel and is now implementing the learning identified which included greater professional curiosity and helps inform allocation of cases
- Children's social care are much stronger in recognising risks within safeguarding, as outlined within the ILACs.
- Within Dorset Health Care an advice line for staff within the Trust supports early help and prevention



Safeguarding partners improvement and progress

The BCP SCP can report on how each of the three statutory safeguarding partners has improved their understanding and approach to safeguarding children:

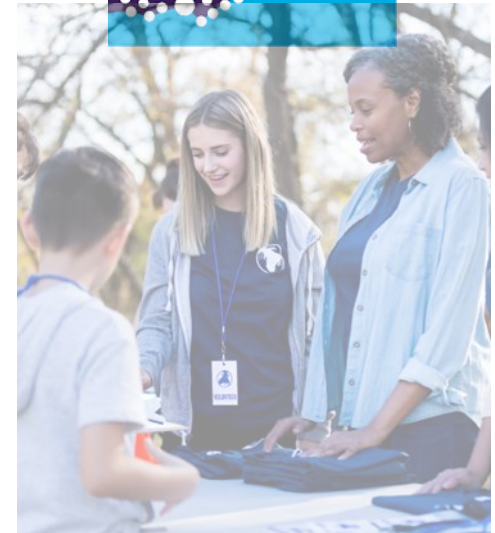
BCP Council Children's Services

Achieved 'good' from Ofsted reflecting the improvements made for outcomes for children and showing improvement in practice. We now write to the child, and our performance data is strong.

There were many positives identified within the ILACs report (published [January 2025](#)) that rated Children's Services as 'good' including safeguarding children, management oversight, and the care we show our children. Young carers and Reunification were particularly highlighted, and we know a number of things we are doing are innovative. Writing to the child was viewed positively as Ofsted could see the real difference this made and ensured our children remain at the forefront of our thoughts and practice.

We have also:

- Established strong foundation for Early Help and partnership working, including early help strategy, Early Help Strategic Partnership, and early help assessments strengthening our community response to needs and support, as well as creating clear pathways
- We have actively participated in the BCP Community Safety Partnership, maintaining our role as lead over children's safeguarding but partnering with other work that impacts on the community and bringing curiosity around the impact we make
- We have used Turnaround programme funding to employ a worker into the early help space and delivered work within the YJS space to work with our young people early when they begin to become involved with criminality.





- **NHS Dorset Integrated Care Board**
- **Dorset Health Care University NHS Foundation Trust (DHC)**
- **University Hospital Dorset (UHD)**

NHS frontline staff, working in a wide range of professions across a wide range of organisations, play a critical role in safeguarding children and young people.

NHS Dorset Integrated Care Board is a statutory partner of the partnership. During the year, NHS Dorset continued to collaborate with partners and NHS providers to ensure that local multi-agency procedures protect children and young people from harm. NHS Dorset continued to oversee the governance arrangements for the NHS provider organisation in BCP. Safeguarding professionals at NHS Dorset chaired several Rapid Reviews and Child Safeguarding Practice Reviews (CSPRs) during the year, helping to ensure learning reached frontline staff. Within NHS Dorset, governance of safeguarding continued to be monitored through a Safeguarding Assurance Group which reports to the Chief Nursing Officer.

Primary care GP services are provided through a range of GP practices across BCP. A team of Named GPs at NHS Dorset support the safeguarding leads in the practices, providing training, supervision and information bulletins. During the year, the Named GPs contributed to the development of a new care pathway to ensure the optimum coordination of care between maternity and primary care services for families who lose a baby at a late stage of pregnancy.





University Hospitals Dorset NHS Foundation Trust provides general and specialist hospital at three hospitals in Bournemouth, Poole and Christchurch.

During the year, hospital staff continued to play an active role in multi-agency procedures to protect children and young people who were at risk of being missing, exploited or trafficked. The safeguarding team continued to collaborate with a third sector provider which provides domestic abuse advocacy to patients in the hospitals, ensuring that children exposed to domestic abuse in their families are safeguarded from harm.

During the year, the Named Doctor for Safeguarding contributed to a video campaign to raise awareness of the dangers of knife crime to school-aged children. University Hospitals Dorset continued to host a child protection team, contributing to strategy meetings about children and young people who were at risk of abuse or neglect and providing medicals where required.

The Named Midwife continued to work closely with local authority colleagues to ensure safeguarding risks to unborn children were recognised and addressed. During the year, the Named Doctor for Children in Care supported work to improve the timeliness of the delivery of health assessments for children coming into care.



Dorset HealthCare University NHS Foundation Trust is the main provider of NHS mental health, learning disability and community-based physical health care services in BCP.

The safeguarding team at Dorset HealthCare is responsible for safeguarding children, adults, Prevent, Multi-Agency Public Protection Arrangements (MAPPA) and Mental Capacity Act (MCA) improvement work. During the year, Dorset HealthCare continued to provide the health function within the Multi-Agency Safeguarding Hub (MASH).

The Named Nurse for Safeguarding Children continued to lead collaboration with the partnership, ensuring the statutory functions of 'Working Together' were met. The safeguarding team at Dorset HealthCare continued to provide an internal advice line, providing staff with advice about safeguarding concerns, early help and prevention. Dorset HealthCare continued to participate in sub-groups of the partnership and in task and finish groups making improvements to local safeguarding procedures.

During the year, Dorset HealthCare contributed to commissioner-led transformation programmes in children, young people and family's mental health and a neuro-developmental all-age autism review.



Dorset Police

A force review, supported by the HMICFRS inspection highlighted that workloads for CAIT officers were very high. This supported the recruiting of additional staff which will improve the wellbeing of the existing team, allow us to respond to incidents in a timelier manner and improve the service we deliver to victims.

Child Abuse Investigation Team (CAIT) resources are now aligned along local authority boundaries in order to allow more effective partnership working and has continued to see high levels of demand and is therefore investing in additional staff (4 officers/staff)

Structures have aligned to Dorset Families First Pathfinder with regular monitoring in place. Dorset Police attend national Pathfinder meetings which illustrate the progress Dorset has been able to make compared to some areas. This learning will be applied to the BCP area also.

The Dorset Police PEEL inspection found the MASH to be effective and identified a need to increase the multiple-skill levels in the MASH staff in order to be able to respond to high demand such as Police Protection Notices, strategy meetings and case conferences.

Other areas of progress include:

- The Force has improved links between our Intelligence Bureau and High Harm unit to ensure reports received regarding concerning behaviours of individuals can be investigated. This follows learning from an investigation of physical and sexual abuse committed by a male who health had previously reported to the Police
- On average the MASH process 1200 Child Public Protection Notices a month, sharing this information to relevant partners to support safeguarding of children
- On average the MASH is collating 110 strategy discussions a month
- For each initial child protection conference (ICPC) that has taken place in this period, Dorset Police have ensured that a police report has been available at every ICPC.





The work of the safeguarding partnership sub-groups

During 24/25, the BCP SCP had the following principal sub-groups. Each of these groups worked around the partnership priorities (see above). It is important to also acknowledge that each of these groups have had to take time to become established and therefore the outcome of their work may not yet be evidenced. Nonetheless, during this period of transition, partners demonstrated great commitment to prioritise safeguarding as demonstrated with their engagement in forming these groups and collaborating in the work.

The principal group is the

- Quality Assurance & Learning Group (QALG)

The following groups reporting to the QALG

- Child Safeguarding Practice Review Group
- Education sub-group
- Multi-agency audit sub-group
- Task and Finish Sub-Groups:
 - Neglect
 - Harmful Sexual Behaviour





Quality Assurance & Learning Group

The purpose of the Quality Assurance and Learning Group (QALG) is to act on behalf of the BCP Safeguarding Children Partnership to oversee, monitor and provide assurance on the effectiveness of the implementation and progress of the partnership multi-agency safeguarding arrangements and strategic priorities.

The membership of the group is established and has included a representative from the education sector.

The QALG scrutinises the activities undertaken by the other sub-groups, through progress reports that are reviewed at the 3 times yearly meetings. A quality assurance report including issues to escalate is submitted to each Delegated Safeguarding Partners meeting.

What has the group worked on?

During this reporting period, the group has ensured that the learning from the reviews has been shared across the partnership and is strengthening the processes to seek assurances of the impact of the learning for children, young people and their families.

The QALG scrutiny is supported by an agreed dataset which has prompted curious questions around practice that has led to further exploration and assurance from partners, such as, the reasons for the high number of child protection registrations.

The group has been active in shaping the multi-agency learning offer, ensuring it reflects the current priorities and is accessed by partners.





Quality Assurance & Learning Group continued

How the partnership benefits from single agency audit/review activity

Children's Services have continued to build on Practice Weeks.

These highlight and explore key lines of enquiry using a variety of quality assurance methodologies as well as observations of practice, feedback from experts by lived experience and lunch and learn sessions. They are also increasingly including multi-agency partners. Being involved in quality assurance activity for a group of practitioners that might not ordinarily undertake systematic quality assurance supports professional CPD – which has the potential to influence the overall stability and confidence of the local workforce. Within these 12 months period we have held practice weeks within the following service areas: MASH and assessment, PLO and Court, Kinship Care, Children with Disabilities and the Targeted Support Service.

Alongside this activity, focused reviews are a comprehensive overview of practice within a particular area of interest. Learning from these reviews has informed process, policy and practice. Within this year focussed reviews have been delivered regarding: Children in care, Assessment and planning, Care Experience Young people (accommodation and extended offer).

Dorset police Investigative Standards Team have been commissioned to complete audited reviews of crimes, stop search forms, PPN's and other material generated in dealing with young people.

The reviews include whether the voice of the child has been captured.

Future direction for the group:

Further work is in progress to ensure that

- Data is consistently provided by partners, systematically reviewed alongside thorough and pertinent analysis to ensure that the QALG can fulfil its scrutiny and assurance functions
- The QALG will implement a new multi-agency quality assurance framework to provide guidance and direction to the work of the group, embedding the child-centred focus it has developed and strengthen evidence of impact and improvement; including how child and family feedback shapes the work of the partnership
- It will improve its multi-agency view on communications and engagement activity with children and families and frontline professionals to ensure it has a good reach to the frontline and routes for system feedback
- The group will review its role in Joint Thematic Area Inspection readiness – to ensure the partnership is well prepared should a JTAI take place, this will be done through improving the overall co-ordination of information held and regular reporting.



Child Safeguarding Practice Review Group

The purpose of the Child Safeguarding Practice Review Group (CSPRG) is to act on behalf of the BCP Safeguarding Children Partnership (the Partnership) in fulfilling its statutory responsibility to identify improvements that can be made to safeguard and promote the welfare of children through local child safeguarding practice reviews (CSPR).

This group is chaired by NHS Dorset (ICB), Designated Nurse and reports to the quality assurance group where there is scrutiny around progress of actions from any Rapid Reviews or CSPRs undertaken.

The chair provides a quarterly report highlighting positives and challenges to progressing and learning or actions. The panel is well established, and this space provides an opportunity to explore ideas and ensure learning from national reviews or wider learning from external reviews are considered in the context of BCP.

An example of this is the CSPR subgroup sought assurance from partners that the learning from the Theo review is embedded in practice in BCP. Assurance statements were sought from partners to ensure this.

What has the group worked on?

During this period the following activity related to safeguarding reviews has taken place:

- 0 CSPR commissioned
- 1 child safeguarding report was published
- 1 rapid review was completed
- 3 local reviews took place or were finalised.

Each review has identified learning points which are disseminated across the partnership and included within the multi-agency safeguarding training offer: as both specific learning events and woven into core training content. Equally learning from national reviews is disseminated



What are the future steps

- Review the SPR process ensuring it is robust and enables effective decision making around reviews, that it links well with other relevant processes such as the CDOP
- Review and update the means of assuring ourselves that learning has been applied to practice with the development and introduction of an assurance tool. This will need to be developed in partnership for each partner to complete, reflect on what they have done with aggregate insights to assess overall impact.

Child Safeguarding Practice Review Group



Reviews undertaken in this reporting period

CSPR – “Daniel & Sarah” - This review concerned the death and injuries sustained to a 7 weeks old baby and older injuries sustained by sibling ‘Sarah’ aged under two at the time of ‘Daniels’ death.

- As a result of the CSPR Daniel and Sarah, CSPR, NHS Dorset has led on implementing ICON across the NHS and introduced to children’s social care to ensure that parents and carers receive consistent messages regarding responding to crying babies.
- NHS Dorset has led on revising the Non-Mobile Baby and child protocol and the unborn baby protocol
- The review’s recommendations have been included within the neglect task and finish group; specifically relating recognition of neglect and tools to assess child neglect.

Learning from this review has been further enhanced by the completion of a multi-agency baby audit with particular focus on the presentation of non-mobile babies at emergency departments and the quality of partnership working. Learning has also been deepened through a multi-agency physical abuse audit and learning events.

The report and 7 point briefing were published.

⇒ [DANIEL-AND-SARAH-FINAL-REPORT-JULY-2024.pdf](#)

⇒ [Daniel & Sarah 7minute briefing](#)

Rapid Review – Child “Alex”

This review involved the online grooming of a (then) 13-year-old child and the subsequent sexual and physical abuse suffered by the victim by a paedophile. The report to the national safeguarding panel was submitted and the panel agreed that no CSPR was required.

Learning and recommendations have been taken forward and we will seek further assurance statements from all agencies involved to assess how the learning has been applied. Additionally

- The CSPR group will co-ordinate assurance statement responses from agencies involved and monitor progress
- The partnership has introduced a new and revised online safety training package.





Child Safeguarding Practice Review Group

Local reviews

During this reporting period, two children were referred to the child safeguarding practice review group, neither case met the requirement to issue a serious incident notification but the partnership believed there was learning to be shared. Local reviews are carried out to the same stand as child safeguarding reviews but might apply different methodologies.

Child 1,

This review concerned a child who had experienced extreme tooth decay and deterioration with the cause linked to the child's severe sensory needs. A seven-minute briefing has been prepared and a learning programme is to be developed for delivery during the next reporting period.



Young Person 2,

This review concerned a care leaver who had turned 18 prior to their death by suicide.

The local review was completed and identified a number of learning themes around access and assessment of supported housing for care leavers, quality of plans to enable greater impact for the young person, understanding needs of older children transitioning to adult safeguarding services and impact of domestic abuse as a factor for this young person suicide.

A domestic abuse related death review which is being led by a neighbouring community safety partnership. Relevant actions are in progress and learning programme to be developed.

“Amy”

This review concerned the death by suicide of an older young person who was a care leaver and young parent whose children were subject to child protection plans.

The local review was completed under the previous partnership arrangements with the learning finalised during this reporting period.

Sadly, 'Amy' was also the victim of domestic abuse and a domestic abuse related death review has been commissioned by the BCP community safety partnership. Relevant actions are in progress and learning programme to be developed.

⇒ **'Amy' 7-point briefing**



Child Safeguarding Practice Review Group



Learning themes from reviews

Each case will identify learning for the partnership. Here we look at the common themes from the reviews conducted during this reporting period. We use these insights to plan future training, inform the partnerships strategic priorities and address system issues through improvement in policy or procedure.

	Transitional Safeguarding & care leaver	Extra Familial Harm incl. online	Physical abuse or violence	Neglect	Late identification of support needs incl. SEND	Lack of Trauma informed practice	Poor information / analysis sharing	Lack of joint working	Domestic Abuse and/ or sexual violence or exploitation victim	Long term mental health needs	Poor understanding of the lived experience of the child/young person
“Daniel & Sarah”											
“Alex”											
Child 1											
Young Person 2											
“Amy”											





Multi-Agency Audit Group

Multi-agency practice audits are central to the BCP SCP quality assurance and learning framework for supporting continuous improvement in safeguarding practice and systems. This group co-ordinates multi-agency audits arising from BCP Partnership strategic priorities, local and national learning reviews.

What has the group worked on?

During this period, the emphasis has been to:

- establish the group, agree terms of reference and membership
- draft a multi-agency audit programme
- finalise the learning from the multi-agency baby audit
- undertake a multi-agency audit on physical abuse (Under11 years old)
- change of chair to BCP Council Children's Services Principal Social Worker – which came into effect in August 2024.

What are the future steps

- Key learning has been identified about the audit process itself, including understanding the capacity of partners involved and the number of cases available to review and access to agency information - the group will seek to apply this learning to improve future multi-agency audits
- Ensure that there is a range of activity to assess and test multi-agency practice such as practice learning events and observations
- Continually review the timetable for audit activity over the next 12 months to be responsive to need, capacity and priorities
- Assess options to digitise Section11 audit process and general audits to improve ways to secure learning insights at both organisation and aggregate levels to inform the system level needs of the partnership.

Education Sub-Group

In partnership with local education partners and providers, the BCP SCP and the Department for Education, a development session was held to develop the aims and ambitions for the education sub-group. This session took place in summer 2024, with the first meeting held in November 2024 and as such the group is still to establish a full engagement and delivery programme which is being developed.

The purpose of the subgroup is to act on behalf of the BCP Partnership (the Partnership) to create an environment which enables local schools, (including independent schools and academy trusts), colleges, early years and other education and childcare providers to be fully engaged, involved and included in the Partnership multi-agency safeguarding arrangements. The group has a strategic purpose for contributing to the Partnership priorities and for ensuring the effectiveness of safeguarding practice and systems in education settings.

What has the group worked on?

- The development workshop brought together education sector leads to establish the local strategic needs and connection to the safeguarding partnership
- Terms of reference have been agreed and membership established
- Senior education representatives have been appointed as chair and deputy chair

What are the future steps

- Stabilise the group and establish its work plan aligned to KCSIE updates and locally identified needs as evidenced from reviews, data and audit returns
- Assess opportunities to improve S175 process and analysis.



Task & Finish Groups

Harmful Sexual Behaviour (HSB)

NHS Dorset Integrated Care Board presented a paper, in January 2024, to inform the place-based delivery arms of the Pan Dorset Safeguarding Childrens Partnership about the Harmful Sexual Behaviour progress. There was also qualitative feedback from schools and professionals working with children at a multi-agency sexual offences workshop and keeping our Young People Safer conference in Autumn/Winter 2023. BCP Safeguarding Childrens Partnership continued with this work with a view to sharing the outputs with colleagues in Dorset.

What has the group worked on?

A multi-agency working group was formed in BCP to move the work on and to create a HSB framework that would provide a consistent approach on dealing with HSB, provide opportunities to keep children and young people from the criminal justice system where relevant and to provide schools and other groups working with young people support and guidance.

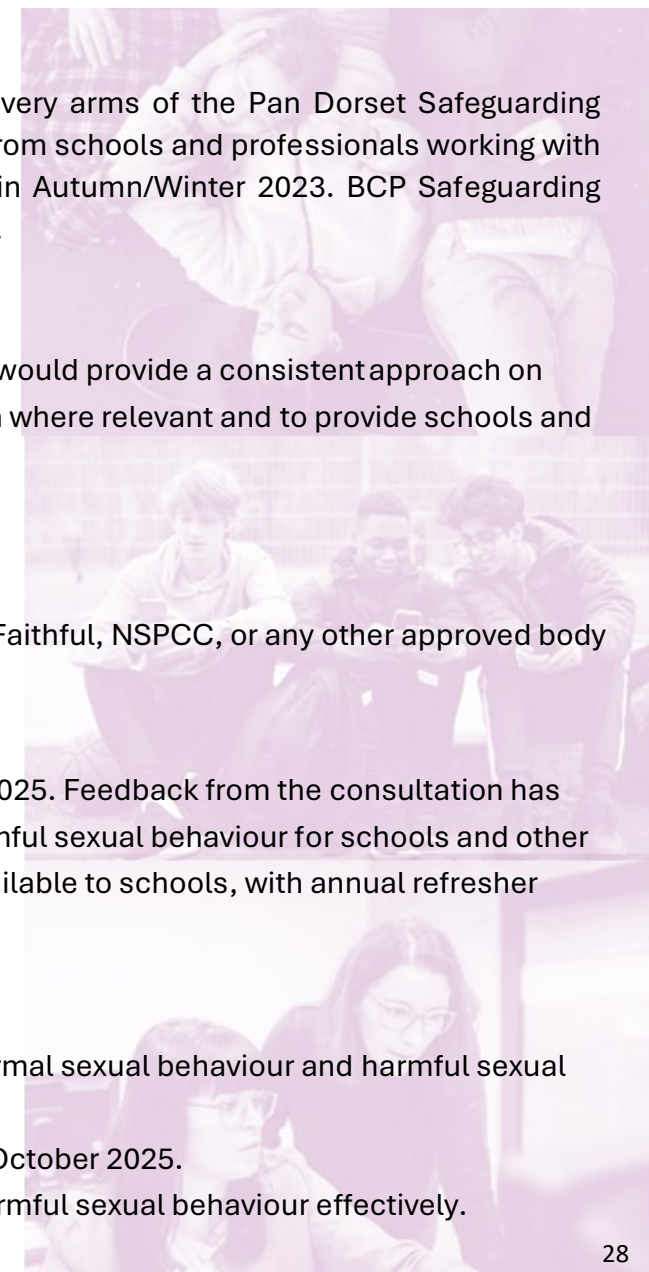
There were several aims of this work:

- The agreed definition to work from is recommended as Hackett's.
- Workforce training for all professionals working with Children and Young People, available from Lucy Faithful, NSPCC, or any other approved body that recognises Hackett's definition of HSB.
- An HSB framework and toolkit for professionals and parents/carers to be fully developed.

The framework has been developed and has been reviewed by educational providers at an event in March 2025. Feedback from the consultation has been used to refine the framework. The framework aims to provide a consistent approach to managing harmful sexual behaviour for schools and other settings working with young people. The framework will include a list of service providers and resources available to schools, with annual refresher training sessions planned.

Next steps

- Free training workshops are taking place in the summer months. Exploring the differences between normal sexual behaviour and harmful sexual behaviour, delivered by a local training provider.
- The framework is expected to be finalised and ready for implementation and circulation to schools by October 2025.
- The goal is to provide practical support and guidance to schools and other organisations to manage harmful sexual behaviour effectively.





Task & Finish Groups

Child Neglect

The Pan Dorset Neglect Scrutiny Report May 2024 suggested the following actions. A working group for each Partnership area should build on the positive work achieved through this scrutiny exercise. Develop a Neglect Strategy which adequately address the needs of children in the BCP area by formulating, and publishing, an action plan to accompany the revised Strategy. The Neglect Assessment Toolkit, assessment tools and associated guidance should be reviewed and rationalised to provide a clear set of documents that guide professionals about how to identify, assess and intervene with neglect.

What has the group worked on?

Following on from the BCP Safeguarding Children Partnership meeting in July 2024 it was agreed that a working group would be formed to review and update the neglect strategy and toolkit.

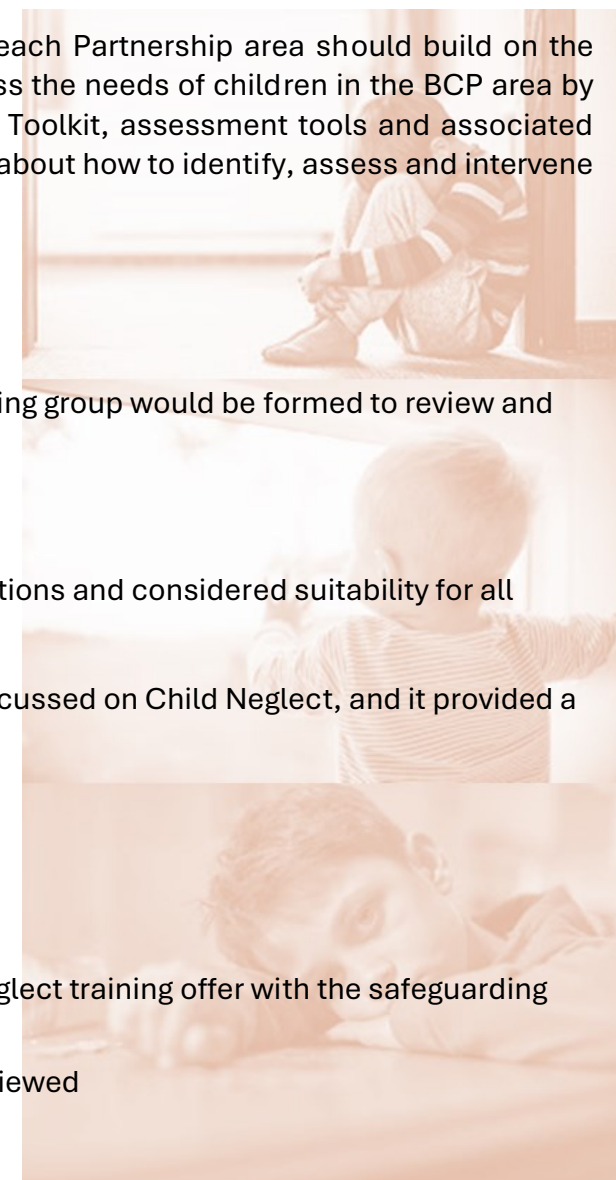
In December 2024 the [BCP Safeguarding Children Partnership Neglect Strategy](#) was agreed and published

A scoping exercise took place to research toolkits and screening tools; the working group reviewed these options and considered suitability for all multiagency professionals.

In March 2025 the annual BCP Safeguarding Children Partnership Conference took place, the conference focussed on Child Neglect, and it provided a multi-agency response to inform the Neglect Action plan for 2025 – 2027 which runs alongside the strategy

Next steps

- A proposal to select a neglect assessment tool and screening tool
- Toolkit /screening tool to be developed and agreed with the partnership and incorporated within the Neglect training offer with the safeguarding training team
- The strategy runs from March 2025 – March 2027 after which the implementation and impact will be reviewed





Independent scrutiny and assurance

This report acknowledges that because the emphasis of partnership activity has been on establishing the core structures to support our multi-agency safeguarding arrangements: including setting up new groups, terms of reference and programmes for the partnership – there has been a limited amount of multi-agency scrutiny and audit activity in this reporting period. Nonetheless the partnership has completed the following and has identified opportunities to improve.

Equally it is important to note that single agency safeguarding assurance activity has continued as usual.

Independent scrutiny – child neglect

Under auspices of the previous Pan-Dorset SCP child neglect had been identified as a priority area for the period 2023-2025.

Independent scrutiny of partnership work on child neglect was commissioned, with the final outcome applied to the BCP SCP work during this reporting period.

This was a significant piece of independent scrutiny, and it covered three primary areas:

- To examine the quality and effectiveness of the multi-agency response to child neglect when concerns have reached a threshold of actual, or likely, significant harm, and whether agencies are working together to identify and act on child neglect.
- To examine whether practitioners have the knowledge, confidence, and capacity to identify and act on neglect.
- To capture information which provides insights into children and families experiences of working with professionals, when neglect has been identified, and the impact in improving children's lives.

The methodology agreed included a focus on BCP area neglect performance data, engagement of professionals working with families in the BCP area and an audit of cases of children living in the BCP area.

Published in May 2024 the findings have been applied to our work in the following ways:

- Shaping the priorities and objectives of the BCP SCP Child Neglect Strategy (agreed in Dec 2024).
- Informing the commissioning of the multi-agency neglect training offer
- Driving the BCP SCP Neglect task and finish group's work plan.



Multi-agency audit physical abuse (children under 11 years old)

A multi-agency audit on the response to physical abuse in children under 11 years was completed.

This activity was in line with Priority 1 for the partnership and would reflect the learning raised because of the [Daniel and Sarah CSPR](#).

The aim of the audit was to gain further insight into practice across the multi-agency spectrum when physical abuse was the primary factor of concern for children under 11, providing additional insight into how policies, procedures and toolkits support multi-agency practitioners to provide effective and appropriate support to children and families.

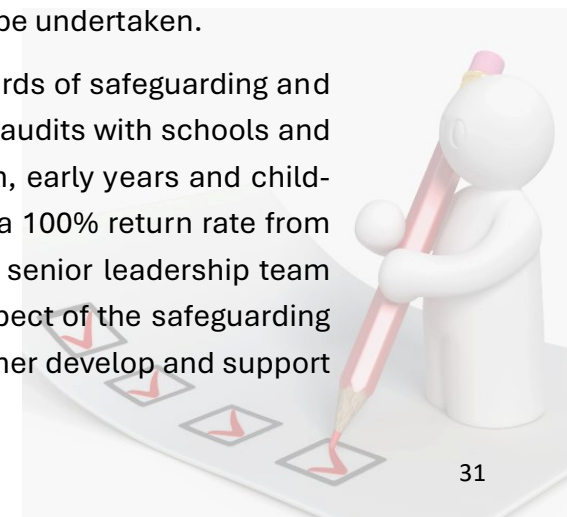
The outcomes from this audit have been disseminated to the partnership with a bitesize learning event as well a report sharing. This enabled not only for insights to be shared but also offers space for reflection with multi-agency colleagues and explore the importance of peer challenge and support. Future audits will

continue to apply this learning dissemination. 25/26 will see an increase in how independent scrutiny is employed to inform and assess the effectiveness of multi-agency practice and safeguarding arrangements. The partnership will further develop this approach in the next reporting period.

Section 11 and Section 175

Section 11 of the Children Act 2004 places a duty on certain organisations to assess the standard of their functions and services are discharged to safeguard and promote the welfare of children. During this reporting period, no Section 11 audit activity has been completed, however under the previous Pan-Dorset SCP, all three statutory partners completed Section 11 audit within the previous two years of this reporting period. Under the new partnership arrangements, a review of how Section 11 audit activity is completed with be undertaken.

Section 175 of the Education Act 2002 sets the safeguarding duties of schools governing bodies to assess the standards of safeguarding and welfare of children within their organisation. BCP council safeguarding in education service co-ordinates Section 175 audits with schools and has secured high compliance rates for this activity. Education Safeguarding Advisers work extensively with education, early years and child-care settings. During this the service have improved the impact of the Education 175 audit process and we received a 100% return rate from schools. Advisers are in the process of analysing the 175 outcome for each school and visits to discuss this with the senior leadership team have started. The service are also now providing advice and guidance to the BCP Council Commissioning Team in respect of the safeguarding aspect of the Alternative Provider Framework and approval process. As noted above, the education sub-group will further develop and support the education sector to develop Section 175 activity and how the insights can be applied strategically.





Multi-agency safeguarding training

Pan-Dorset (covering BCP and Dorset council areas) training offers a core safeguarding training provision with focus on a multi-agency workforce accessed by a wide range of agencies. The administration and co-ordination of the training is paid by income generation. Our aim is to offer a full multi-agency experience to attendees which will build understanding of the distinct roles and frame of reference, ensuring closer working relationships with the child/ young Person at the centre.

The safeguarding training team is a trusted and dependable provider ensuring that organisations meet their safeguarding training requirements. Courses are commissioned through the Learning and Development Framework and meet the specific quality control and contract compliance.

Summary of the training offer 2024-2025

PDSCP Training offer	Number	£	
Safeguarding L2 Foundation	4 (1 on a Saturday)	£55.00	Mandatory
WT (Working Together) Initial	42 (2 on a Saturday)	£82.00	Mandatory
WT update (working Together)	50 (2 on a Saturday)	£55.00	Mandatory
Neglect	3	£82.00	Priority
Safer Recruitment	5	£82.00	Mandatory
Safer Recruitment update	4	£55.00	Mandatory
Managing Allegations	4	£55.00	Dorset Council
Online Safety	2	£55.00	Linked to YP
Missing Exploited Trafficked Children (MET)	3	£85.00	Mandatory
Child Exploitation Basic Awareness Covers IFSA/EFSA Intro for 24/25 programme	3	£55.00	Linked to CSPR
NEW TIP (trauma informed practice) Introduction	4	£55.00	T&F Group
NEW IFCSA Training programme of five course offer (1 & 5 - 2 courses. 2, 3 and 4 - 1 course)	7	£82.00/£55.00	Linked to CSPR
NEW DA	4	FREE	Linked to CSPR



Incorporated to the existing training offer:

When changes to local and national legislation or guidance is known, the information is shared to all relevant training providers to update their training content where required for example:

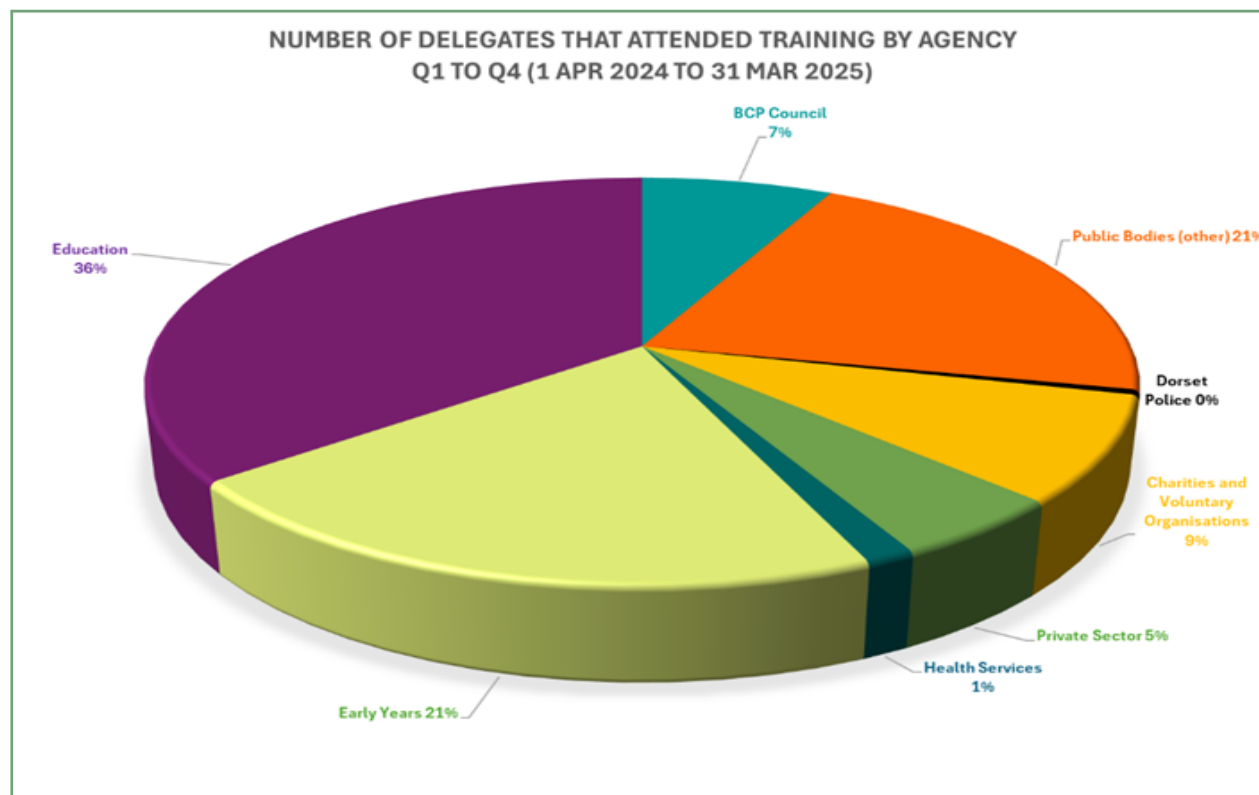
- 7-point briefing – Non-Mobile Babies
- Protocol and tool – Linked to the AS CSPR
- Neglect – Linked to Daniel & Sarah CSPR
- Working together 2023 – Changes to the Safeguarding Partnerships

Attendance

The following charts show the attendance by organisation or sector where known.

It should be noted that the multi-agency training offer is designed to complement all single agency and sector specific training.

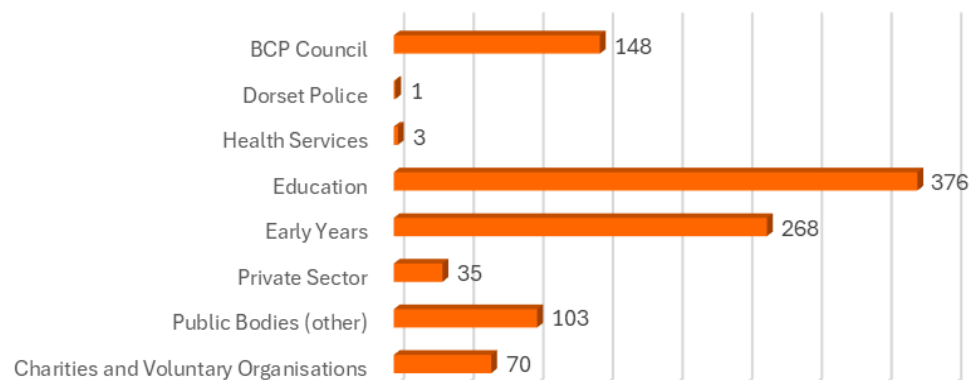
For example, each of the three accountable safeguarding partners have specific safeguarding training available to support the specialisms to roles and legislation required of them.





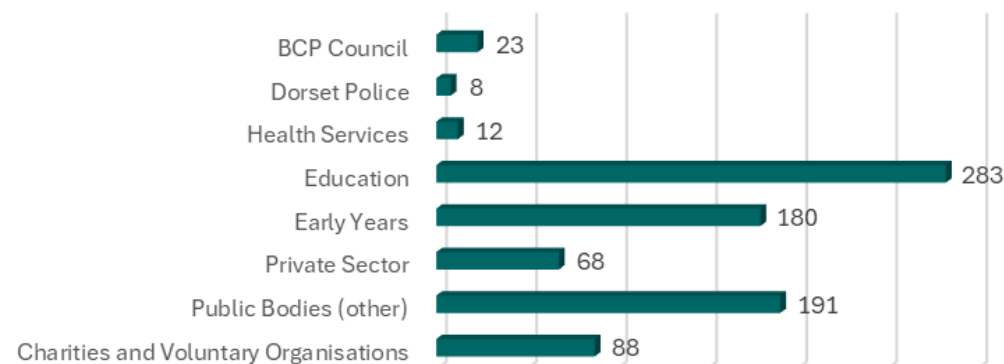
1. PDSCP - Update - Multi-Agency Working Together in Safeguarding (Level 3)

Number of attendees in 2024/25



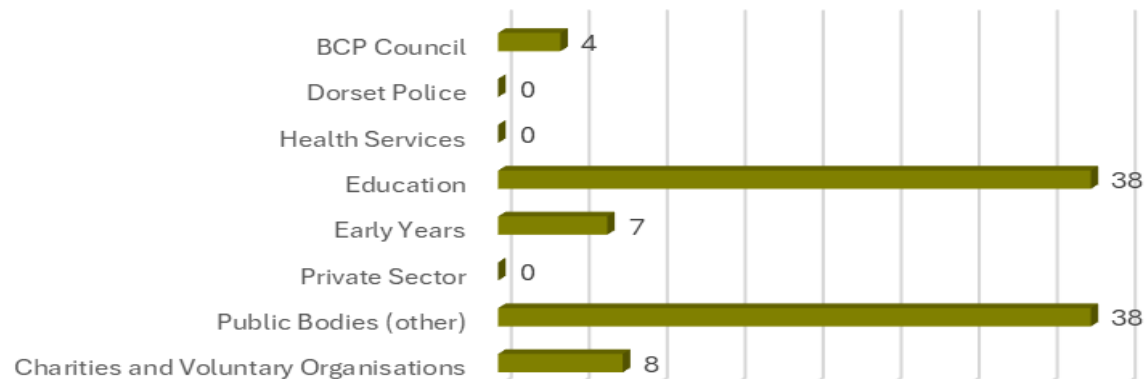
2. PDSCP - Multi-Agency Working Together in Safeguarding (Level 3)

Number of attendees in 2024/25



3. PDSCP - Safer Recruitment

Number of attendees in 2024/25





Three Month Impact Survey Summary

The use of three month impact survey has recently begun and is a useful way to track ways learning has been applied to practice, including confidence levels as well as knowledge gained.

Examples of how the learning has been applied is shown on the next page.

3 Month Impact Survey Results	
Total number of responses received for staff working in the BCP Council area:	
83	
Course Attended Around 3 Months Ago	Number of Delegates
Foundation in Safeguarding Children (former L2 course)	1
Introduction to Intrafamilial Child Sexual Abuse	2
Multi-Agency Working Together in Safeguarding	37
Safer Recruitment	1
Update - Multi-Agency Working Together in Safeguarding	42

Agency BCP Council Area	Number of Delegates
Charities and Voluntary Organisations	6
Early Years/Pre-School	14
Education	32
Local Authority	27
Police/Probationary Service	1
Private Sector	3
On the below scale how would you rate your confidence level in being able to apply what you learnt since attending this session, in your day-to-day role?	
Confident	37
Fairly Confident	10
Very Confident	36
On the below scale how would you rate your knowledge level in being able to apply what you learnt since attending this session, in your day-to-day role?	
Basic Knowledge	1
Extensive Knowledge	18
Fair Knowledge	6
Good Knowledge	58



Have you applied any changes in practice within your organisation since attending this training?

Yes	52
No	31

Examples of how the training has changed practice within the delegate's organisation:

We reviewed and updated our policy to ensure that it is in line with current legislation
When running Parenting Programmes I am more aware of what could be happening for the child in the family and some of the reasons for behaviour.
I have been more vigilant after attending the course and documented more concerns to our DSL.
Mindful of toolkits and applying them to evidence worries and strengths
Using the continuum of need for triaging concerns

Has your learning impacted the children, young people or the families you work with?

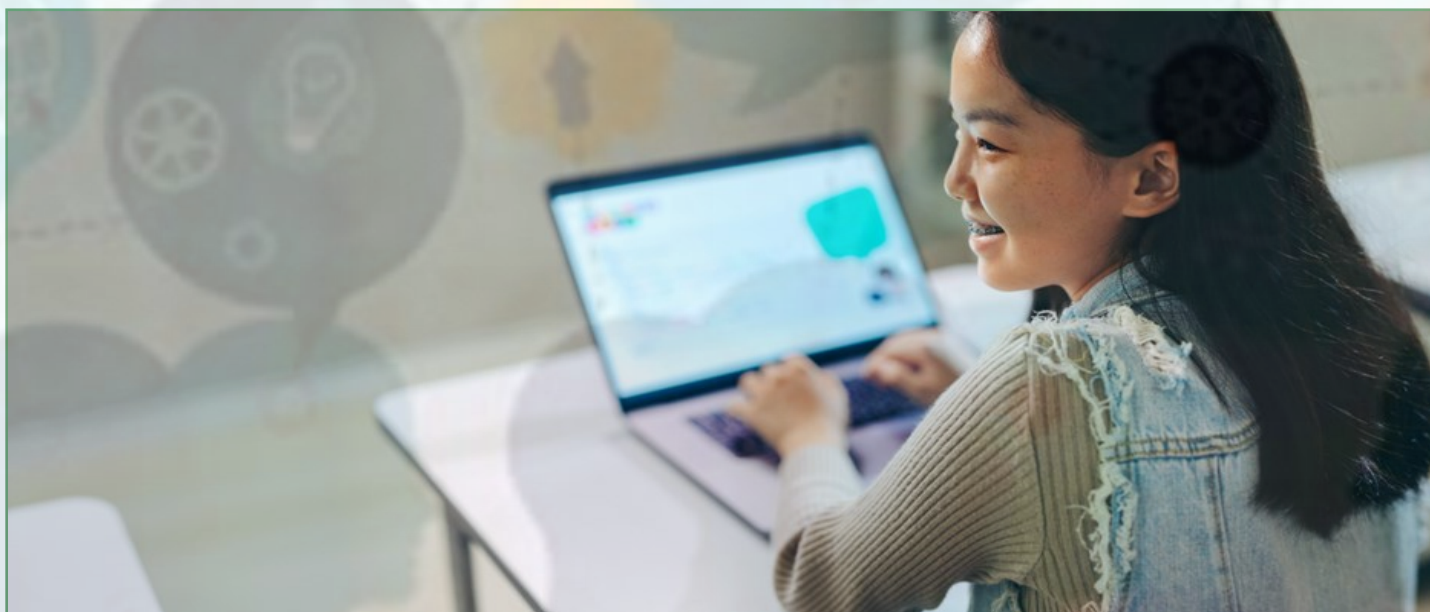
Yes	64
No	19

Examples of how the training has impacted the children, young people and/or the families the delegate works with:

For me, I am new to the area so having a good knowledge of the local agencies was very useful.
Learning about the continuum of need on the training has helped me recognise which support, agencies etc are needed to support the families I work with.
Having more knowledge has allowed me to support the students and have a much better understanding on how to support but also how to talk to them.
The update refresher course helps to remind you to keep policies and procedures up to date and to upskill staff continuously to safeguard children and families better.
Having more awareness means I can support in the best way I can and recognise potential issues in certain situations.



Are you using the toolkits?	
BCP Child Exploitation Toolkit	25
Neglect Toolkit	24
Domestic Abuse Toolkit	16
Working with Parents/Carers with Substance Mis- use Issues Toolkit	10
Mental Health Toolkit	15
None	33
Would you recommend this course to a colleague?	
Yes	83
No	0





Local Authority Designated Officer summary for 24/25

The BCP LADO service is responsible for managing allegations against adults who work with children.

In 2024/25 referrals significantly increased to 655 from 213 in 2023/24, with a 12% increase in the number of consultations also undertaken. There is stability in the situations where threshold is met, and allegation meetings are held which evidences a more confident and consistent service. The education sector remains the largest referrer to LADO, increasing year on year. Referrals from several agencies and cohorts have also increased in referrals year on year, such as NHS, early years, foster carers and police. This is partly attributable to increased awareness and training for partners as well as the improvements in the robustness and transparency of the LADO process within BCP Children's Services.

An increase in establishment to 2 permanent full-time LADOs has meant the service has been able to meet the rise in demand whilst providing a safe and good quality service. The improvements to the LADO referral process and case management system have continued to result in a safer and more robust way of working which partner agencies are familiar with. LADOs have good working relationships with partner agencies with advice and guidance given increasing from 21 (although under recorded) to 152 occasions in this last year. In August 2024, Islington, as an improvement partner to BCP local authority, undertook a thematic audit on the LADO service which concluded LADO work was safe and timely.

In June 2024, BCP's Education/Early Years Safeguarding Advisors (ESAs) moved to be overseen by the same Head of Service as the LADO team to align their work. This change has proved to be beneficial, strengthening the link between LADO, education and early years leading to stronger joined up working and information sharing. ESAs and LADOs attend DSL forums and Head Teacher briefings.





Child Death Overview Panel summary for 24/25

The child death overview panel is the joint responsibility of the local authority and the ICB covering that area. It is a multi-agency panel that reviews all deaths of children. For the Bournemouth, Christchurch and Poole area, there is a joint arrangement with Dorset and Somerset, with the Dorset Council hosted CDOP co-ordinator serving the BCP area.

- CDOP annual report to be published summer 2025 providing full details of the year's activity and statistics.
- Annual Report data will continue to provide local authority level comparative data which was introduced in 2023-2024.
- Successful learning event co-hosted with Somerset on 06 March 2025.
- The Pan Dorset Child Death Co-ordinator has settled well and providing support to Designated Doctors and the Panel.
- Review of strategic governance of the Pan Dorset and Somerset CDOP processes has commenced with the aim to review and highlight system opportunities, challenges and formalise future governance processes. This will progress further once new ICB structures has been formalised





Financial information

Under the previous Pan-Dorset safeguarding arrangements the budget was managed by Dorset Council on behalf of the BCP area. The budget for 24/25 shared here is a headline summary

Partner	Contribution 2024-2025 (£)
Bournemouth, Christchurch & Poole Council	80,800.00
NHS Dorset	37,892.50
Dorset Police	37,892.50
Dfe Working Together 2023 grant (carry over)	47,300.00
Total	203,885.00

Contact us:

safeguardingchildrenpartnershipBCP@BCPcouncil.gov.uk



**BCP SAFEGUARDING
CHILDREN PARTNERSHIP**